



# COMMONWEALTH OF KENTUCKY

## DEPARTMENT OF HIGHWAYS

### PLANS OF PROPOSED PROJECT

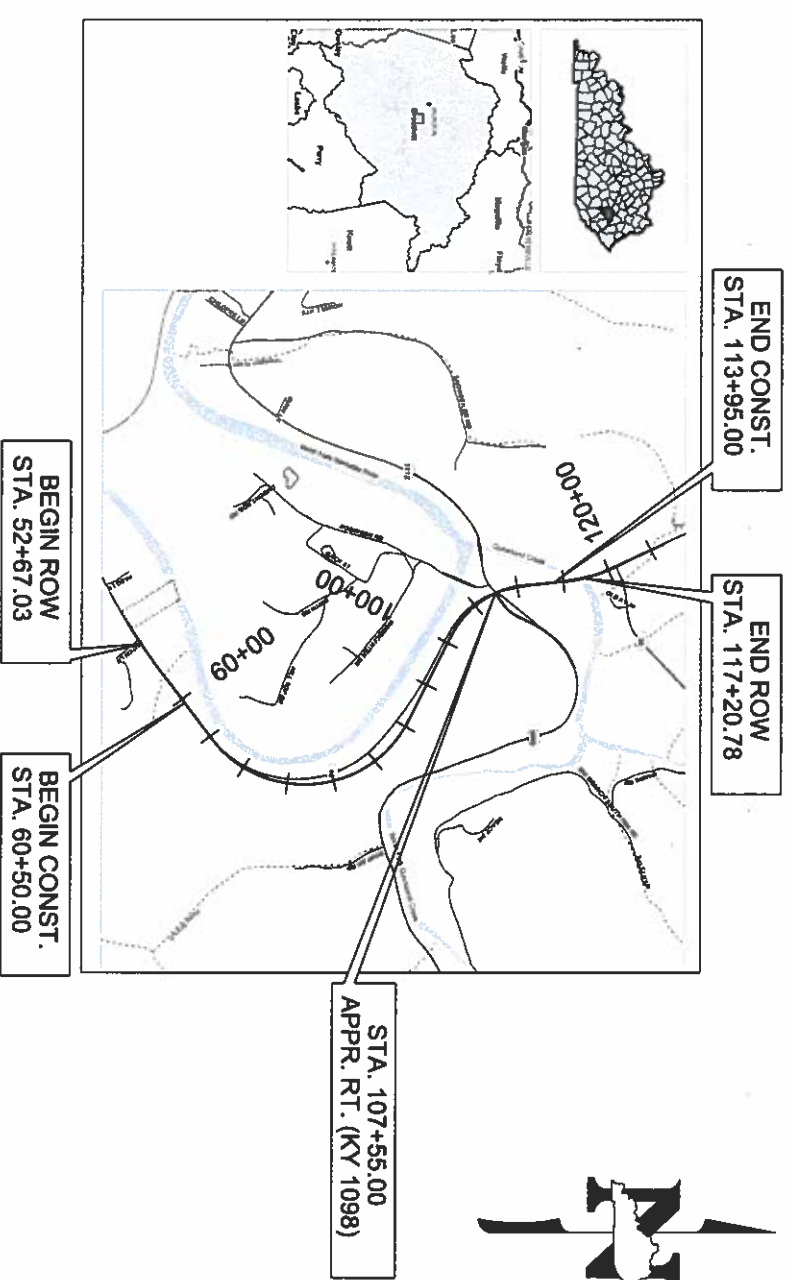
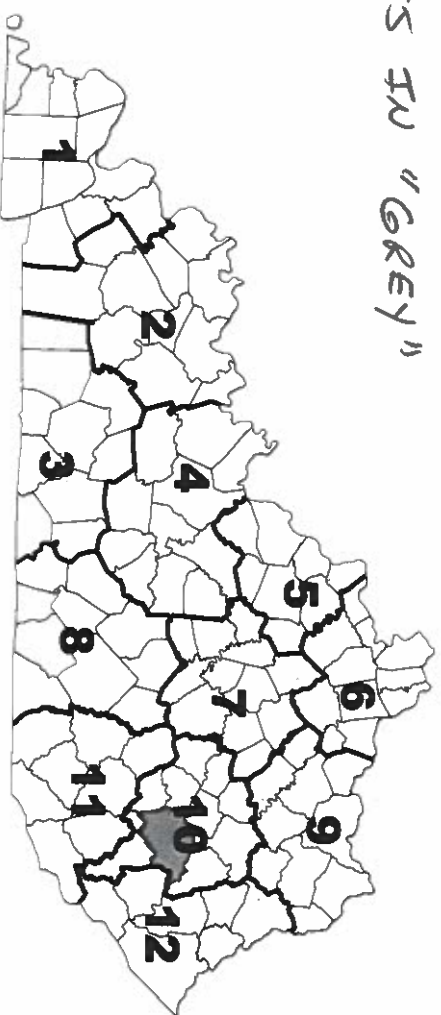
### BREATHITT County

### KY 15 ROCKFALL MITIGATION



PROPOSED AT+T  
FACILITIES IN "RED"

REMOVED AT+T  
FACILITIES IN "GREY"



LAYOUT MAP

THE CONTROL OF ACCESS ON THIS PROJECT SHALL BE BY PERMIT

THIS PROJECT IS ON THE NH SYSTEM

RIGHT OF WAY  
PLANS

#### DESIGN CRITERIA

CLASS OF HIGHWAY	RURAL PRINCIPAL ARTERIAL
TYPE OF TERRAIN	ROLLING
DESIGN SPEED	55 MPH
REQUIRED NPSD	495'
REQUIRED PSD	900'
LEVEL OF SERVICE	N/A
ADT PRESENT ( )	2020 ) 9,400
ADT FUTURE ( )	2040 ) 10,000
DHV	37
D %	57.0
T %	4.6

#### INDEX OF SHEETS

SHEET NO.	DESCRIPTION
R1	LAYOUT SHEET
R2 - R24	TYPICAL SECTIONS - SUMMARY OF QUANTITIES
R17 - R18	RIGHT OF WAY STRIP MAP SHEET
R18	RIGHT OF WAY STRIP MAP SHEET
R19	RIGHT OF WAY MONUMENTATION SHEET
R20	COORDINATE CONTROL SHEET

#### STANDARD DRAWINGS

TPM-115	TTG-160-02	RBR-020	RDX-220-05
TPM-170-01	TTG-165	RBR-055-01	RDX-225-01
TPM-175	TTS-105-02		RDX-230
TPM-206	TTS-135-02		
TPR-100	RBE-100	RDD-040-05	RGS-001-07
TPR-110	RBI-001-12	RDI-001-10	RGI-005-06
TPR-115	RBI-004-06	RDI-002-05	RGX-010-04
TPR-125	RBI-002-07	RDI-041	RPM-110-07
	RBI-004-06	RDP-001-06	
	RBI-001-13	RDP-005-05	
	RBI-005-11	RDP-006-04	
	RBI-015-06	RDP-010-08	
		RDP-210-03	

#### GEOGRAPHIC COORDINATES

LATITUDE 37 DEGREES 31 MINUTES 56 SECONDS NORTH  
LONGITUDE 83 DEGREES 20 MINUTES 31 SECONDS WEST

#### DESIGNED

% RESTRICTED SD \_\_\_\_\_  
LEVEL OF SERVICE \_\_\_\_\_  
MAX. DISTANCE W/O PASSING \_\_\_\_\_

LENGTH	LN. FT.	MILES	LENGTH	LN. FT.	MILES	LENGTH	LN. FT.	MILES	LENGTH	LN. FT.	MILES	LENGTH	LN. FT.	MILES
ADDED			DEDUCTED			ADDED			DEDUCTED			ADDED		
FOR EQUALITIES			FOR EQUALITIES			FOR EQUALITIES			FOR EQUALITIES			FOR EQUALITIES		
NOT INCLUDED			NOT INCLUDED			NOT INCLUDED			NOT INCLUDED			NOT INCLUDED		
RAILROAD CROSSINGS NO.			RAILROAD CROSSINGS NO.			RAILROAD CROSSINGS NO.			RAILROAD CROSSINGS NO.			RAILROAD CROSSINGS NO.		
BRIDGES			BRIDGES			BRIDGES			BRIDGES			BRIDGES		

LETTING DATE	
ITEM NO.	10-5014.00
COUNTY OF	BREATHITT
SHEET NO.	R1

**THP**  
HJB Professional Engineers, Inc.  
31185 Circle  
Frankfort, KY 40601  
(502) 895-8900

NORTH FORK KENTUCKY RVE

**INITIAL KY 15**

LT / RT	STA. TO STA.	Size Type	TYPE	QTY
RT	106+50 to 107+00	4' FB	ROCK	-
RT	108+50 to 113+50	4' FB	II	1.35' 521 TONS

**GUARDRAIL CONSTRUCTION**

LT/RT	BEGINNING STATION	ENDING STATION	BEGINNING TREATMENT	ENDING TREATMENT	PAY LENGTH	GUARDRAIL TYPE
RT	112+50	113+96	TY. 1	113+98	150'	STEEL W BEAM
RT	111+00	113+98	TY. 1	TIE TO EXISTING	237.5'	STEEL W BEAM

PI STA. 106+30.40  
 (X) = 561.7796, 4395  
 (Y) = 3727239, 7844  
 D = 57'03.21" RT  
 C = 05'58'06"  
 T = 521.84'  
 L = 955.98'  
 R = 960.00'  
 E = 132.67'  
 e = 8.0%

PI STA. 107+55 RT  
 (X) = 561.8031, 0760  
 (Y) = 3727603, 1623  
 D = 31'25.54" LT  
 C = 13'38.31"  
 T = 118.18'  
 L = 230.41'  
 R = 420.00'  
 E = 16.31'  
 e = 5.4%

PI STA. 107+55 RT  
 (X) = 561.8031, 0760  
 (Y) = 3727603, 1623  
 D = 31'25.54" LT  
 C = 13'38.31"  
 T = 118.18'  
 L = 230.41'  
 R = 420.00'  
 E = 16.31'  
 e = 5.4%

PI STA. 107+55 RT  
 (X) = 561.8031, 0760  
 (Y) = 3727603, 1623  
 D = 31'25.54" LT  
 C = 13'38.31"  
 T = 118.18'  
 L = 230.41'  
 R = 420.00'  
 E = 16.31'  
 e = 5.4%

PI STA. 107+55 RT  
 (X) = 561.8031, 0760  
 (Y) = 3727603, 1623  
 D = 31'25.54" LT  
 C = 13'38.31"  
 T = 118.18'  
 L = 230.41'  
 R = 420.00'  
 E = 16.31'  
 e = 5.4%

PI STA. 107+55 RT  
 (X) = 561.8031, 0760  
 (Y) = 3727603, 1623  
 D = 31'25.54" LT  
 C = 13'38.31"  
 T = 118.18'  
 L = 230.41'  
 R = 420.00'  
 E = 16.31'  
 e = 5.4%

PI STA. 107+55 RT  
 (X) = 561.8031, 0760  
 (Y) = 3727603, 1623  
 D = 31'25.54" LT  
 C = 13'38.31"  
 T = 118.18'  
 L = 230.41'  
 R = 420.00'  
 E = 16.31'  
 e = 5.4%

PI STA. 107+55 RT  
 (X) = 561.8031, 0760  
 (Y) = 3727603, 1623  
 D = 31'25.54" LT  
 C = 13'38.31"  
 T = 118.18'  
 L = 230.41'  
 R = 420.00'  
 E = 16.31'  
 e = 5.4%

PI STA. 107+55 RT  
 (X) = 561.8031, 0760  
 (Y) = 3727603, 1623  
 D = 31'25.54" LT  
 C = 13'38.31"  
 T = 118.18'  
 L = 230.41'  
 R = 420.00'  
 E = 16.31'  
 e = 5.4%

PI STA. 107+55 RT  
 (X) = 561.8031, 0760  
 (Y) = 3727603, 1623  
 D = 31'25.54" LT  
 C = 13'38.31"  
 T = 118.18'  
 L = 230.41'  
 R = 420.00'  
 E = 16.31'  
 e = 5.4%

PI STA. 107+55 RT  
 (X) = 561.8031, 0760  
 (Y) = 3727603, 1623  
 D = 31'25.54" LT  
 C = 13'38.31"  
 T = 118.18'  
 L = 230.41'  
 R = 420.00'  
 E = 16.31'  
 e = 5.4%

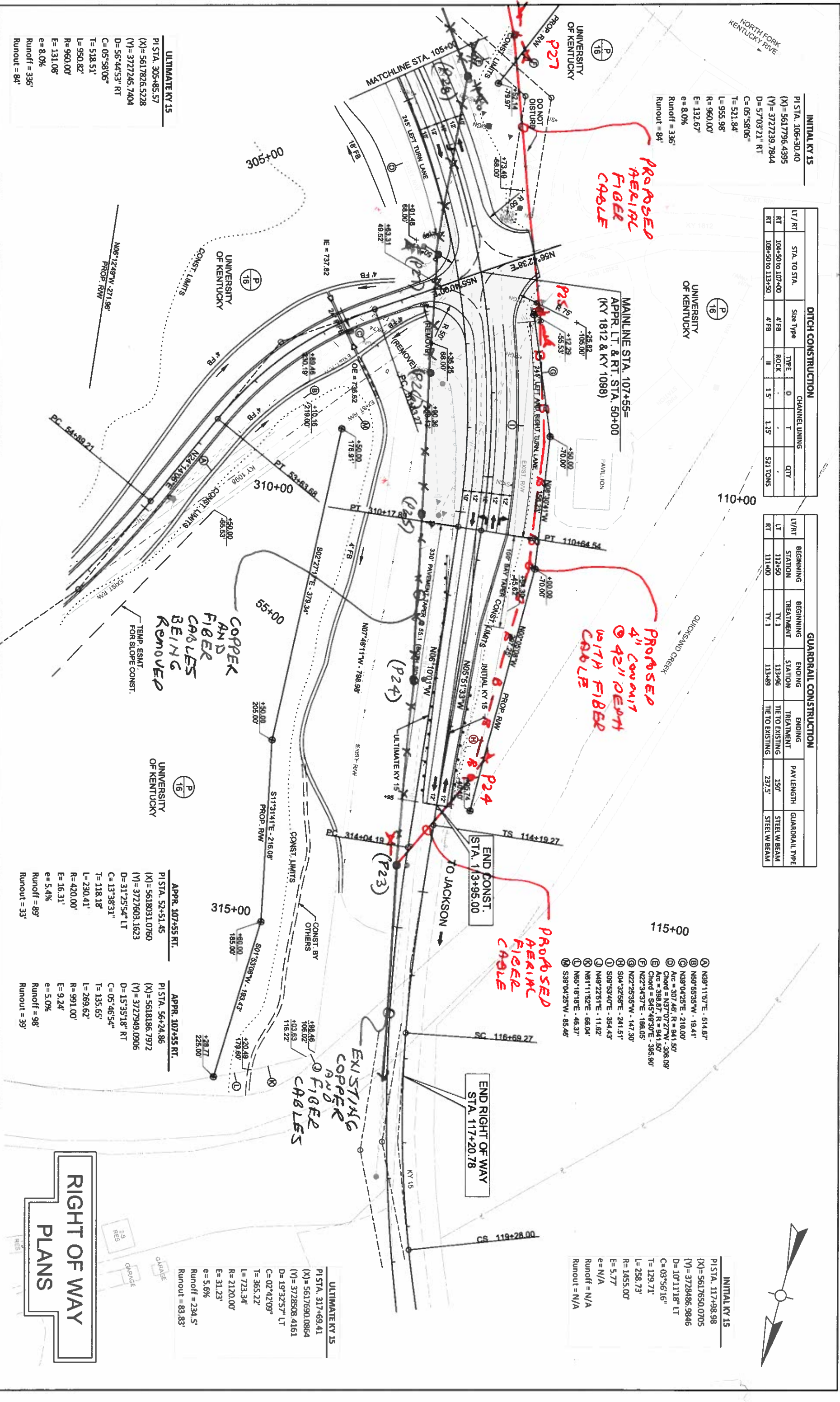
PI STA. 107+55 RT  
 (X) = 561.8031, 0760  
 (Y) = 3727603, 1623  
 D = 31'25.54" LT  
 C = 13'38.31"  
 T = 118.18'  
 L = 230.41'  
 R = 420.00'  
 E = 16.31'  
 e = 5.4%

PI STA. 107+55 RT  
 (X) = 561.8031, 0760  
 (Y) = 3727603, 1623  
 D = 31'25.54" LT  
 C = 13'38.31"  
 T = 118.18'  
 L = 230.41'  
 R = 420.00'  
 E = 16.31'  
 e = 5.4%

PI STA. 107+55 RT  
 (X) = 561.8031, 0760  
 (Y) = 3727603, 1623  
 D = 31'25.54" LT  
 C = 13'38.31"  
 T = 118.18'  
 L = 230.41'  
 R = 420.00'  
 E = 16.31'  
 e = 5.4%

PI STA. 107+55 RT  
 (X) = 561.8031, 0760  
 (Y) = 3727603, 1623  
 D = 31'25.54" LT  
 C = 13'38.31"  
 T = 118.18'  
 L = 230.41'  
 R = 420.00'  
 E = 16.31'  
 e = 5.4%

PI STA. 107+55 RT  
 (X) = 561.8031, 0760  
 (Y) = 3727603, 1623  
 D = 31'25.54" LT  
 C = 13'38.31"  
 T = 118.18'  
 L = 230.41'  
 R = 420.00'  
 E = 16.31'  
 e = 5.4%



**PROPOSED AERIAL FIBER CABLE**

**PROPOSED 4" CONDUIT @ 42" DEPTH WITH FIBER CABLE**

**PROPOSED AERIAL FIBER CABLE**

**EXISTING COPPER AND FIBER CABLES**

**COPPER AND FIBER CABLES BEING REMOVED**

TEMP. ESMT. FOR SLOPE CONST.

**ULTIMATE KY 15**  
 PI STA. 305+85.57  
 (X) = 561.7826, 5228  
 (Y) = 3727245, 7404  
 D = 56'44.53" RT  
 C = 05'58'06"  
 T = 518.51'  
 L = 950.82'  
 R = 960.00'  
 E = 131.08'  
 e = 8.0%

**APPR. 107+55 RT.**  
 PI STA. 52+51.45  
 (X) = 561.8031, 0760  
 (Y) = 3727603, 1623  
 D = 31'25.54" LT  
 C = 13'38.31"  
 T = 118.18'  
 L = 230.41'  
 R = 420.00'  
 E = 16.31'  
 e = 5.4%

**APPR. 107+55 RT.**  
 PI STA. 56+24.86  
 (X) = 561.8186, 7972  
 (Y) = 3727949, 0906  
 D = 15'35.18" RT  
 C = 05'46.54"  
 T = 135.65'  
 L = 269.62'  
 R = 991.00'  
 E = 9.24'  
 e = 5.0%

**ULTIMATE KY 15**  
 PI STA. 317+69.41  
 (X) = 561.7690, 0864  
 (Y) = 3728508, 4161  
 D = 19'32.57" LT  
 C = 02'42.09"  
 T = 365.22'  
 L = 723.34'  
 R = 2120.00'  
 E = 31.23'  
 e = 5.6%

**RIGHT OF WAY PLANS**

COMMONWEALTH OF KENTUCKY  
 DEPARTMENT OF HIGHWAYS

DRAWING TITLE: KY 15 PLAN SHEET

HORIZONTAL SCALE: 1"=50'



STA. 105+00 TO STA. 120+00

ITEM NO. 10-5014.00  
 SHEET NO. R12

COUNTY OF BREATHITT



COMMONWEALTH OF KENTUCKY  
DEPARTMENT OF HIGHWAYS

DRAWING TITLE: KY 15 PLAN SHEET

HORIZONTAL SCALE  
SCALE: 1"=50'

STA. 95+00 TO STA. 105+00

ITEM NO. 10-5014.00 COUNTY OF BREATHITT  
SHEET NO. R110

OpenRoads Designer v10.16.2.287

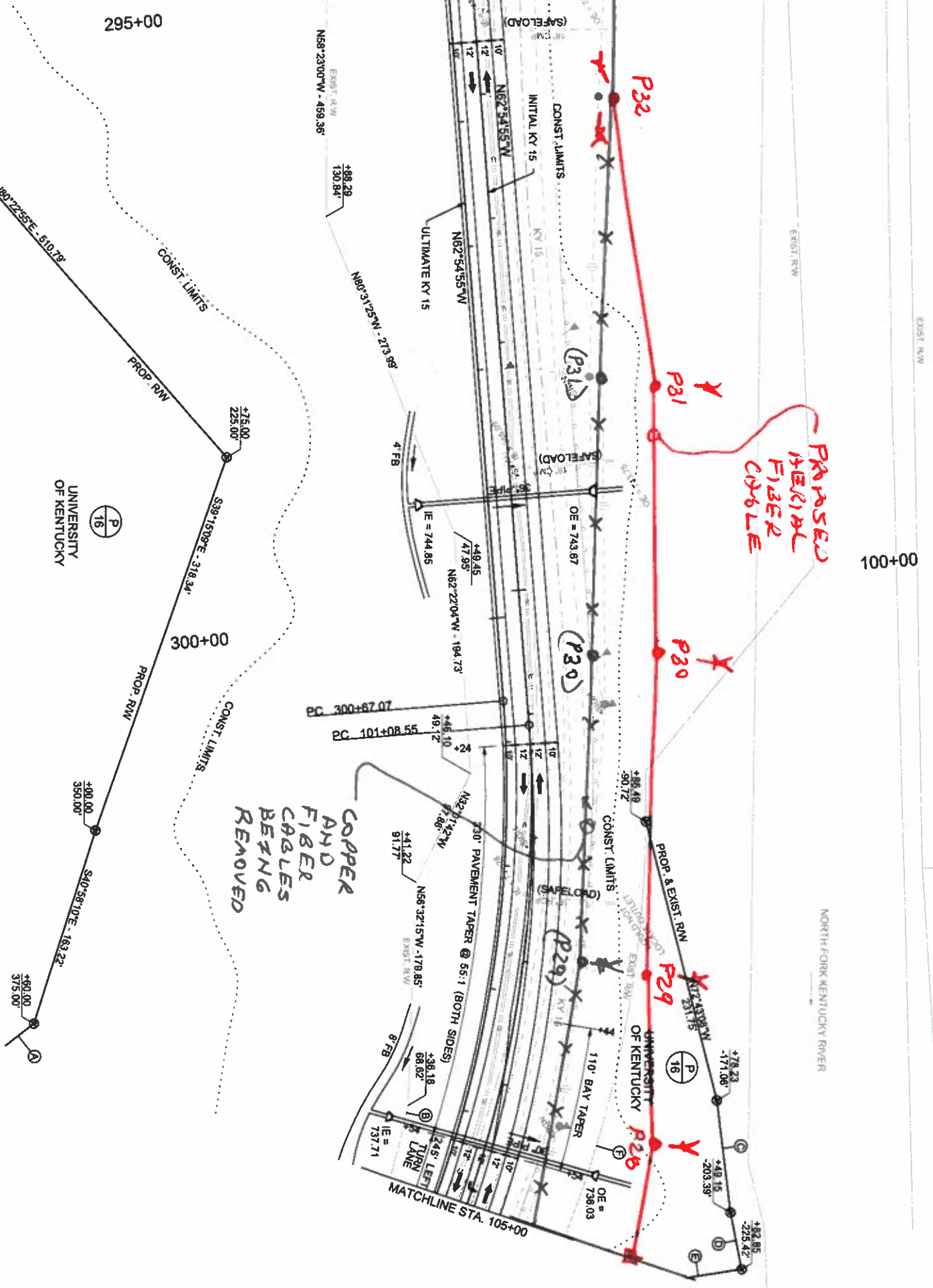
USER: gjeadin

FILE NAME: G:\ENGIN\103500 KY 15 BREATHITT COUNTY\PHASE 1\040\PLAN PRODUCTION\PLAN R110.DGN

- Ⓐ S06°12'49"E - 271.98'
- Ⓑ Arc = 307.46', R = 941.50'
- Ⓒ Chord = N37°07'27"W - 306.08'
- Ⓓ N65°34'48"W - 90.68'
- Ⓔ N68°41'34"W - 46.74'
- Ⓕ N22°34'37"E - 166.05'
- Ⓖ Arc = 388.87', R = 941.50'
- Ⓗ Chord = S45°49'30"E - 395.90'

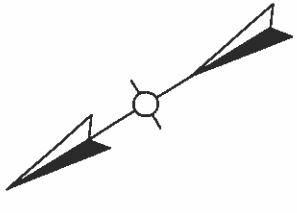
DITCH CONSTRUCTION			
LT / RT	STA. TO STA.	Size Type	CHANNEL LININGS
LT	99+25	OUTLET DT	II
RT	104+50	OUTLET DT	II
RT	95+00 to 104+50	4" FB	ROCK
RT	99+25	INLET DT	ROCK
RT	104+50	INLET DT	ROCK
RT	104+50 to 105+00	4" FB	ROCK

**RIGHT OF WAY  
PLANS**



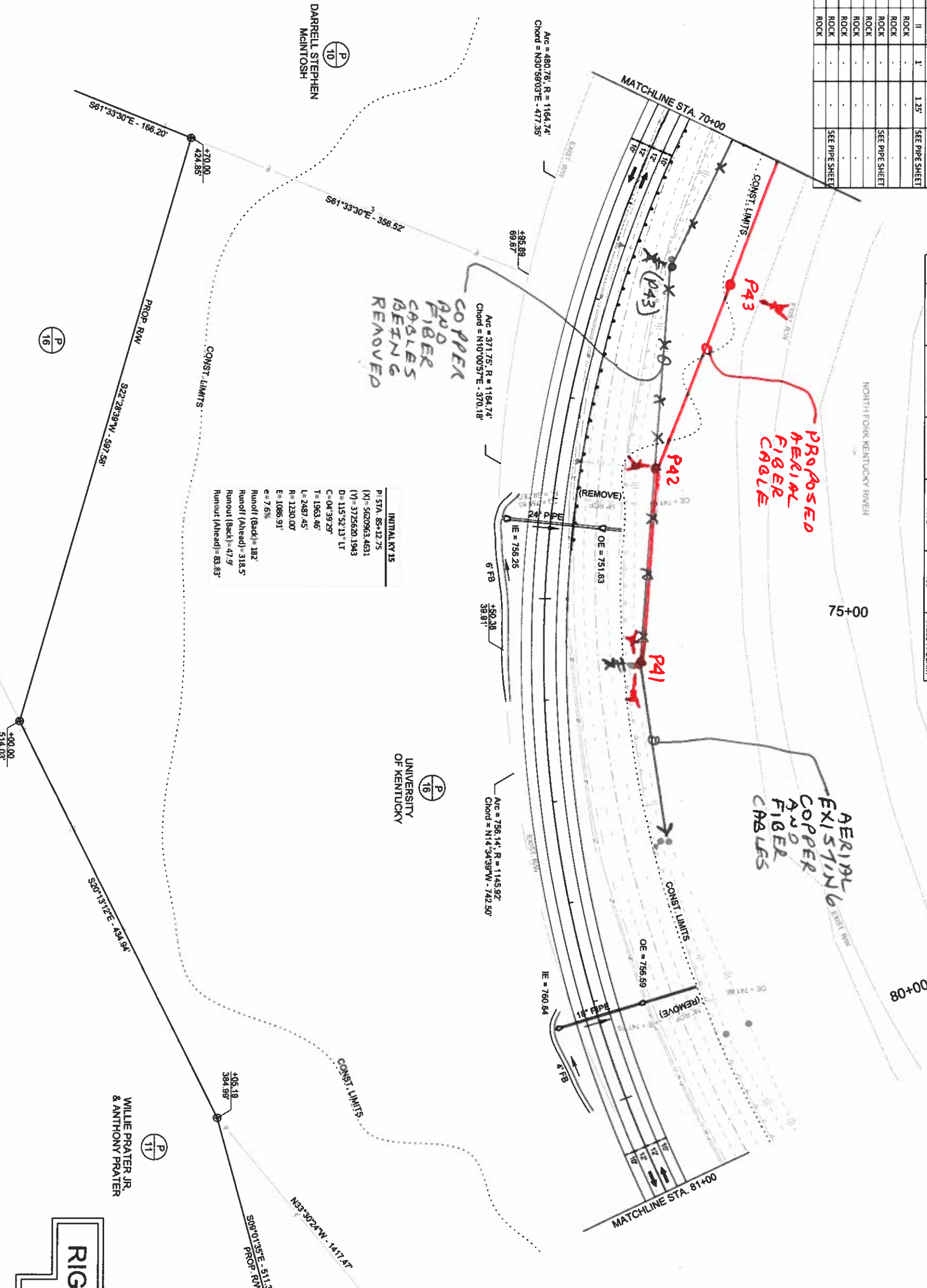
**ULTIMATE KY 15**  
 PI STA. 305+85.57  
 (X) = 5617826.5228  
 (Y) = 3727245.7404  
 D = 56°44'53" RT  
 C = 05°58'06"  
 T = 518.51'  
 L = 950.82'  
 R = 960.00'  
 E = 131.08'  
 e = 8.0%  
 Runoff = 336'  
 Runout = 84'

**INITIAL KY 15**  
 PI STA. 106+30.40  
 (X) = 5617796.4395  
 (Y) = 3727239.7844  
 D = 57°03'21" RT  
 C = 05°58'06"  
 T = 521.84'  
 L = 955.98'  
 R = 960.00'  
 E = 132.67'  
 e = 8.0%  
 Runoff = 336'  
 Runout = 84'



LT / RT	STA. TO STA.	Site Type	CHANNEL LINING		QTY
			TYPE	D	
LT	74+25	OUTLET DT	III	1'	2'
LT	79+15	OUTLET DT	II	1'	1.25'
RT	65+00 to 70+00	6' FB	ROCK	-	SEE PIPE SHEET
RT	74+00 to 74+25	6' FB	ROCK	-	SEE PIPE SHEET
RT	74+25	INLET DT	ROCK	-	SEE PIPE SHEET
RT	74+25 to 76+00	6' FB	ROCK	-	SEE PIPE SHEET
RT	76+00 to 79+00	4' FB	ROCK	-	SEE PIPE SHEET
RT	79+00 to 79+15	4' FB	ROCK	-	SEE PIPE SHEET
RT	79+15 to 81+00	INLET DT	ROCK	-	SEE PIPE SHEET

LT/RT	STATION	BEGINNING TREATMENT	ENDING STATION	ENDING TREATMENT	PAY LENGTH	GUARDRAIL TYPE
						STEEL W/BEAM
LT	70+00	MATCHLINE	74+50	TV 1	400'	STEEL W/BEAM

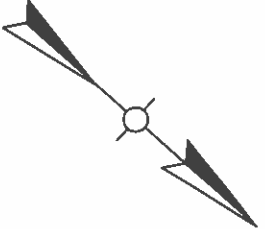
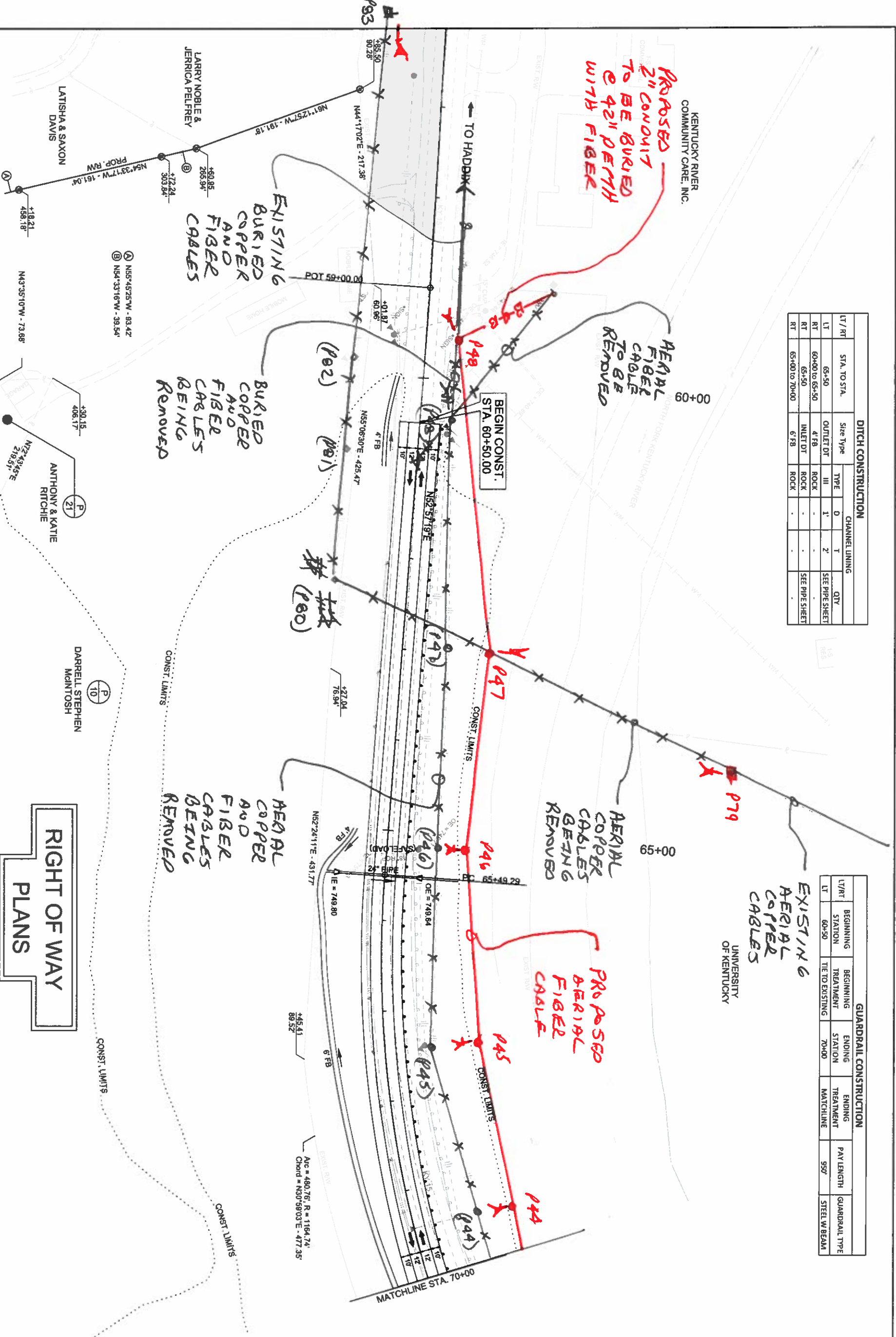


**RIGHT OF WAY PLANS**

DITCH CONSTRUCTION						
LT / RT	STA. TO STA.	Size Type	TYPE	CHANNEL LINING	QTY	
LT	65+50	OUTLET DT	III	1'	2'	SEE PIPE SHEET
RT	60+00 TO 65+50	4' FB	ROCK	-	-	SEE PIPE SHEET
RT	65+50	INLET DT	ROCK	-	-	SEE PIPE SHEET
RT	65+00 TO 70+00	6' FB	ROCK	-	-	SEE PIPE SHEET

GUARDRAIL CONSTRUCTION						
LT/RT	BEGINNING STATION	BEGINNING TREATMENT	ENDING STATION	ENDING TREATMENT	PAY LENGTH	GUARDRAIL TYPE
LT	60+50	TIE TO EXISTING	70+00	MATCHLINE	950'	STEEL W/BEAM

INITIAL KY 15  
 PI STA. 85+12.75  
 (X) = 5620983.4631  
 (Y) = 3726620.1943  
 O = 115'52.13" LT  
 C = 04'39.29"  
 T = 1963.46'  
 L = 2487.45'  
 R = 1230.00'  
 E = 1086.91'  
 e = 7.6%  
 Runoff (Back) = 182'  
 Runoff (Ahead) = 318.5'  
 Runout (Back) = 47.9'  
 Runout (Ahead) = 83.83'



RIGHT OF WAY  
 PLANS

HORIZONTAL SCALE  
 SCALE: 1"=50'

STA. 59+00 TO STA. 70+00

ITEM NO. 10-5014.00 COUNTY OF BREATHTITT  
 SHEET NO. R4

COMMONWEALTH OF KENTUCKY  
 DEPARTMENT OF HIGHWAYS

DRAWING TITLE: KY 15 PLAN SHEET

FILE NAME: G:\ENGR\RD1350.00 KY 15 BREATHTITT COUNTY\PHASE INCORPORAN PRODUCTION\PLAN\PLAN 1.DGN

OpenRoads Developer v10.18.2.287

USER: aledan